

Role Summary

Job title:	River Engagement Assistant
Location of job:	Hybrid working – home based with regular travel throughout the catchment.
Post holder reports to:	River Engagement Officer
Salary:	£23,400 - £25,000 per annum (9% employer pension contribution)
Position type:	12-month fixed term, with opportunities for development, and intention to extend subject to funding.
Working arrangements:	Full-time role (37.5 hours per week) with a flexible working approach. 28 days Annual Leave plus bank holidays. This will increase to 30 days, plus bank holidays, after successful completion of two years' service.
Additional benefits:	A generous home working allowance will be provided. We welcome applications from candidates looking to work part-time in this role.

Overall purpose of the job

The River Engagement Assistant will join our friendly and supportive Community Engagement Team, helping run activities to inspire people and empower them to take action for their rivers.

You will be active in the catchment, supporting volunteer tasks, helping run school sessions, and assisting with family workshops. You will facilitate fun and memorable experiences through challenges, games and experiments. You will facilitate activities so that people can explore their river environments and feel the benefits of being close to nature. You will encourage people to develop new skills as they participate in conservation activities such as river clean-ups, water quality monitoring and wildlife surveys.

As this job involves regulated activity with children, an Enhanced DBS check will need to be undertaken by the successful candidate prior to employment. A criminal record is not necessarily a bar to employment with us. Decisions will be made on a case-by-case basis with support of HR specialists.



Our Challenge



The Severn is the longest river in the United Kingdom, stretching 220 miles from its source in the Cambrian Mountains in Powys Wales, through the counties of Shropshire, Worcestershire and into Gloucestershire to the iconic estuary. The culture and economies of the historic settlements across the catchment have been intertwined with the river through commercial navigation, fishing, water supply, and trade. Today, the Severn's rivers, including important tributaries such as the Teme, the Stour and the Warwickshire Avon, continue to play an essential role in supporting wildlife, wellbeing and economies of the region.



Our freshwater environments are in trouble like never before. The pressures are seemingly endless – sewage pollution, agricultural run-off, habitat loss and major weather events including drought and flooding are all threatening irreversible destruction of our freshwater ecosystems.

Despite the enormity of the challenge, it's not too late.

Do you want to be part of the river Severn's recovery?

Our Team



The Trust has four divisions:

- Operations Team
- Development Team
- Community Engagement Team
- Finance and Administration Team

Our staff have an intimate understanding of the river Severn and its tributaries. We're proactive and hands on, working with farmers, land managers and communities to deliver ecological restoration at a local level, with catchment-wide impacts.

Our vision for the Severn is

A healthy, resilient river Severn for everyone.

Key areas of work include:

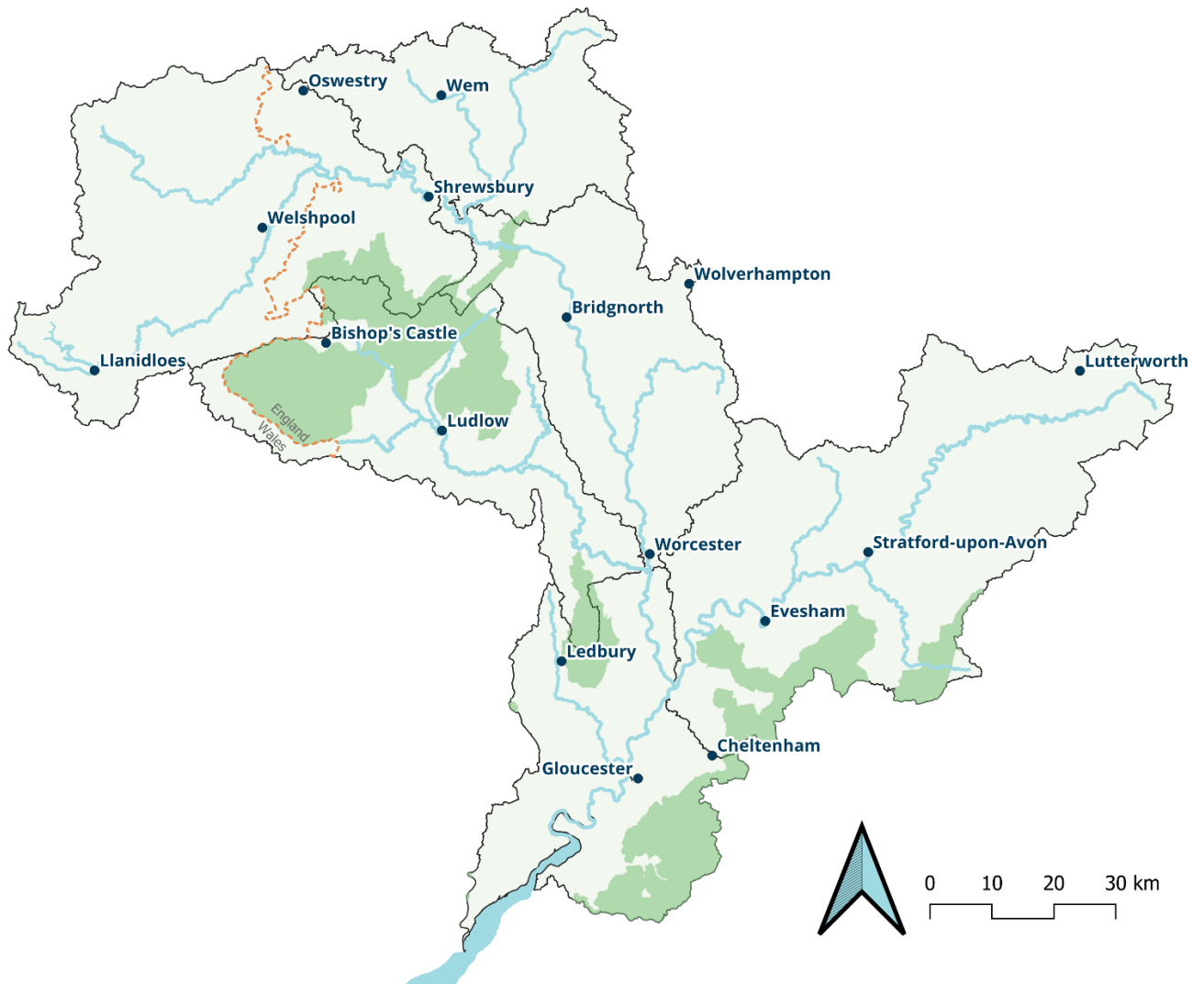
- Removing barriers to fish migration, helping unlock new habitats.
- Working with farmers on ambitious regenerative agriculture schemes.
- Restoring and creating habitat mosaics at a catchment scale including; wetlands, riparian woodlands and floodplain meadows.
- Mobilising volunteers to take action for their local water environment through citizen science monitoring and practical conservation.
- Establishing inspiring learning programmes to upskill and empower the next generation of river guardians.

Inevitably, we do not work alone. Our work requires close collaboration with a host of statutory agencies, non-government organisations and private sector companies to maximise our impact. To learn more about our work, please visit our website: www.severnriverstrust.com





Our Working Area



The role will be mainly operating in the middle region of our catchment, though some travel will be required around our wider working area. Travel costs (car / bicycle mileage, public transport) will be reimbursed.



Travel and Schedule Requirements

This post will be based from the home address of the appointed employee with regular use of the Trust's head office in Martley, Worcestershire.

The post holder will need to travel regularly around the Severn catchment (see map on previous page) for meetings, site visits, community events etc.



A full, current UK driving license and daily access to a vehicle covered by business insurance is essential for this role.

To reduce travel time and carbon footprint we prefer candidates to live within the catchment.

Mileage costs will be reimbursed.

This position will occasionally require you to work during evenings, weekends and public holidays to meet the requirements of the role. The Trust operates a time-off in lieu system.



Role Purpose

Community Engagement Activities

- Assist with delivery of our established community engagement programmes, including:
 - Helping run practical conservation activities for volunteers such as litter picks, vegetation management and tree planting.
 - Learning how to train and support volunteers in citizen science monitoring including wildlife surveys and water quality testing.
 - Supporting sessions for schools including assemblies, in-class workshops and site visits to the river.
 - Co-facilitating engaging workshops all about rivers for families with young children.
- Prepare equipment and learning resources for activities, ensuring items are well-looked after.
- Take initiative to build your knowledge and develop skills for the role.
- Assist with collecting monitoring data to inform progress and end of project reports.

Organisation and Teamwork

- Act as a reliable member of the team supporting high quality volunteering and learning activities.
- Organise your time effectively to travel to various locations around the catchment and spend some time working independently from home.
- Learn to prioritise your workload and ensure tasks are completed within agreed timeframes.

Partnership Working and Communication

- Be a friendly face to represent Severn Rivers Trust in a professional manner.
- Shadow colleagues to gain experience in effective communication, and collaborative working practices with our key partners, e.g. Wildlife Trusts, Environment Agency, Natural England and Local Authorities.
- Attend meetings, events and shows, speaking confidently to different audiences (e.g. families, schools, volunteers and environmental groups).

Other Duties:

- In addition to the above, you will play a key role in the Severn Rivers Trust team helping to deliver our strategic objectives.
- Prioritise health and safety and wellbeing. Take responsibility for yourself and be aware of the needs of others (e.g. participants, volunteers and colleagues).
- Support a workplace culture where staff are motivated to come to work, perform to their highest standard and are comfortable being themselves



Person Specification

Skills and Experience	Essential	Desirable
Passion for rivers, wildlife and nature conservation.	✓	
Driven to learn new skills, and improve your own understanding of river conservation, volunteering and engagement activities.	✓	
Able to follow organisational policies especially around safeguarding and health and safety.	✓	
Enjoyment of practical 'hands-on' work and spending time outdoors.	✓	
Willingness to 'get stuck in' to help complete tasks.	✓	
Great communication skills, confident in speaking to new people.	✓	
Highly effective and reliable team member.	✓	
Experience using IT software including email, MS Word, PowerPoint, Excel and videoconference apps.	✓	
Ability to travel regularly and to remote sites and work some evenings and weekends.	✓	
A full UK driving license, with access to a personal vehicle insured for business purposes.	✓	
Experience leading fun accessible learning activities in indoor and outdoor locations.		✓
Practical experience of conservation schemes (e.g. habitat creation, woodland planting, river engineering).		✓
Experience in project monitoring - collection, analysis and presentation of data.		✓



Application Process

For further information or to discuss this post please contact Alice Moore, River Engagement Officer.

For emails enquiries: alice.moore@severnrivertrust.com

To chat or WhatsApp: 07923 220394

Deadline for applications: Midnight Sunday 20th October

Interview date: Thursday 31st October

To apply for this role, please forward a CV and Cover Letter to recruitment@severnrivertrust.com.

Your CV should be no longer than 2 A4 sides and should present all your relevant work history, education and training.

Your cover letter should be no longer than 2 A4 sides and should summarise how your skills and experiences enable you to meet the requirements of this position, as set out in the Role Requirements and Person Specification sections of this job description.

We will respond to all applicants with an email message to confirm receipt. Unfortunately, we cannot offer feedback on candidates who do not reach the interview stage.



Thank you for your interest in this role with Severn Rivers Trust!